

Silicon Carbide Heater

✓ **Starbar Type RR**

The Type RR is the standard Starbar® element. A high-density self-bonded silicon carbide element, type RR is available in a large range of diameters and lengths. This type of element is available in the following cold end types

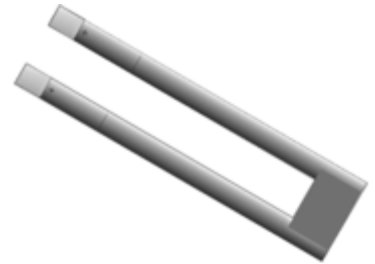
One Piece RR -- The cold ends are impregnated with silicon metal to reduce their resistance. This type is highly stable at temperatures up to 1700°C

Three Piece RR -- Features welded-on low resistance cold ends (LRE) which run cooler than any one-piece cold ends. Therefore, they are more energy efficient. Maximum temperature 1425°C



✓ **Starbar Type U, W**

The U type Starbar® is manufactured by taking two carefully-matched SiC rods and uniting them with a silicon carbide bridge. These elements provide for wiring both terminals from one side of the furnace. Ideal for drop-through designs, radiant tube systems or where one element will not span the heating chamber. For maximum performance up to 1425°C



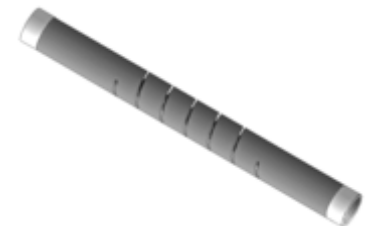
✓ **Starbar Type WDB**

Star performers in float glass production type W three phase Starbars® are comprised of high-purity, high-density, silicon carbide grains that are self bonded through recrystallization at elevated temperatures. Sintering at temperatures in excess of 2200°C provides a structural density of 2.50 grams per cubic centimeter. Such high structural density results in Starbars® of maximum strength and minimum porosity, with an extremely slow aging characteristic. For maximum temperature up to 1425°C



✓ **Starbar Type SE**

This high-density silicon carbide element is spiral-cut to increase the resistance of the hot zone. This element is designed for wiring at both ends. For maximum temperature up to 1650°C



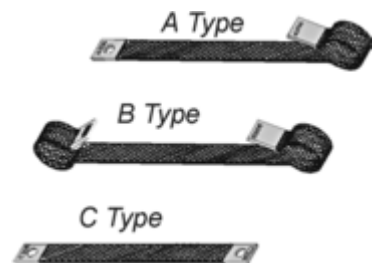
✓ **Starbar Type SER**

This high-density double-spiral element is cut so as to place both electrical terminations on the same end of the element. They are supplied with the terminal assembly attached. Type SER Starbars® are used where furnace design or dimensions preclude wiring from both sides of the furnace. This type is ideal for blind holes and insertion in tubes. For maximum performance up to 1650°C



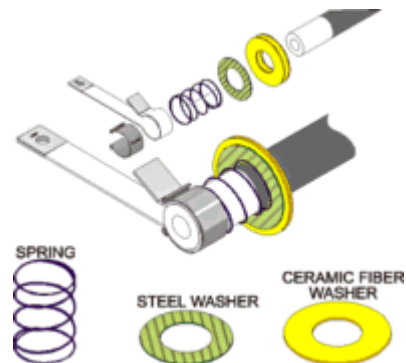
✓ **Starbar accessory Straps**

The braided aluminum terminal straps are available in 25, 50, 100 and 200 amperage ratings. They are available in the three primary styles shown



Clamps

Stainless-steel terminal clamps are used to hold the aluminum straps in contact around the circumference of the Starbars®. The aluminum strap and terminal clamp should be installed at the very ends of the Starbar®. Expansion tools are available for installation and removal of the T type clamps.



Gasket

Terminal gasket assemblies, consisting of two ceramic fiber washers, one steel washer, and a spring can be used as an alternative to packing ceramic fiber insulation around the Starbar